

Z1 Auto™ System

AUTO-ADJUSTING CONTINUOUS POSITIVE AIRWAY PRESSURE SYSTEM Clinician User Guide

Unlock Z1 Device

The device is locked after each power cycle. In order to modify the treatment pressure settings and switch between function modes, you may follow the instructions below to unlock the **Z1** device.

1. Power up the **Z1** device, hold **Start/Stop** button while in standby mode (pressure of "0.0" indicated on the display) (Figure 1) to enter Treatment Pressure Setting mode (APAP-LOC (Figure 2) or CPAP-LOC (Figure 3)).
2. Hold **Up and Down Buttons** at the same time while in Treatment Pressure Setting mode to unlock the **Z1** device. (Figures 4 & 5) To continue set the CPAP treatment pressure or APAP-High/Low, please see Section "Setting the Treatment Pressure in CPAP Mode" and "Setting the Minimum and Maximum Pressures in APAP Mode" for details.

Choosing Between CPAP Mode or APAP Mode

If the **Z1** device is locked, you need to unlock the device before switching function modes. To unlock the **Z1** device, please see section "Unlock Z1 Device" for details.

The mode, CPAP or APAP is set simultaneously with the selection of the **Z-Breathe** setting.

APAP mode is designated by the word "APAP" on the LCD screen and CPAP is designated by the word "CPAP" on the LCD screen. The **Z-Breathe** setting of 1-3 is indicated by the number following the APAP or CPAP designation on the LCD screen. For example, APAP-2 means APAP mode with **Z-Breathe** setting of 2 (Figure 7) and CPAP-3 means the CPAP mode with a **Z-Breathe** setting of 3. (Figure 8) To set the APAP or CPAP mode and **Z-Breathe** setting, press and hold down the **Up Arrow Button** and **Down Arrow Button** simultaneously while in the standby mode (pressure of "0.0" indicated on the display). Once you see the CPAP or APAP indicator on the LCD screen, you can select the desired mode and **Z-Breathe** setting using the **Up Arrow Button** and **Down Arrow Button**. After you have made your selection, press and hold the **Start/Stop Button** to save it.

Setting the Treatment Pressure in CPAP Mode

If the **Z1** device is locked, you need to unlock the device before modifying CPAP treatment pressure. To unlock the **Z1** device, please see section "Unlock Z1 Device" for details.

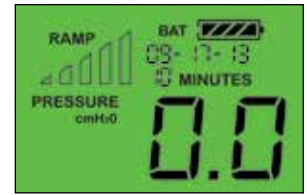
1. Once you have chosen the CPAP mode you can set your CPAP Treatment Pressure. To do this, press and hold down the **Start/Stop Button** while in standby mode (pressure of "0.0" indicated on the display). You will see the current treatment pressure setting flashing on the LCD display with the words "CPAP" above the pressure value. (Figure 4) Use the **Up Arrow Button** and **Down Arrow Button** to adjust the pressure settings then press and hold the **Start/Stop Button** to save it.
2. You will then be returned to standby mode and can start your treatment at any time by pressing the **Start/Stop Button**.

Setting the Minimum and Maximum Pressures in APAP Mode

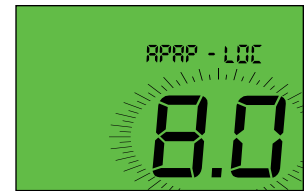
If the **Z1** device is locked, you need to unlock the device before modifying APAP maximum and minimum pressures. To unlock the **Z1** device, please see section "Unlock Z1 Device" for details.

1. Once you have chosen the APAP mode you can set your Maximum and Minimum treatment pressures. To do this, press and hold down the **Start/Stop Button** while in standby mode (pressure of "0.0" indicated on the display). You will see the current maximum pressure setting flashing on the LCD display with the words "APAP HI" above the pressure value. (Figure 5) Use the **Up Arrow Button** and **Down Arrow Button** to adjust the pressure settings then press and hold the **Start/Stop Button** to save it.
2. Once the maximum pressure has been saved, you can adjust and save the minimum pressure. You will see the current minimum pressure setting flashing on the LCD display with the words "APAP LO" above the pressure value. (Figure 8) above the pressure value. Use the **Up Arrow Button** and **Down Arrow Button** to adjust the pressure settings then press and hold the **Start/Stop Button** to save it.
3. You will then be returned to standby mode and can start your treatment at any time by pressing the **Start/Stop Button**.

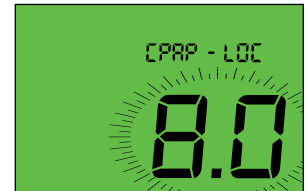
Please refer to the User's Guide for instructions on how to set the Ramp Time and Pressure. These settings can be made while the patient when the machine is locked.



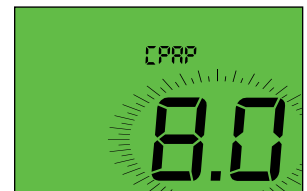
(Figure 1)



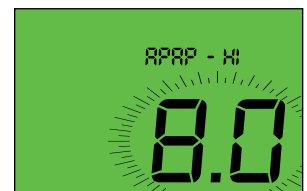
(Figure 2)



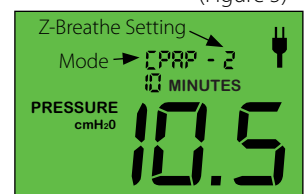
(Figure 3)



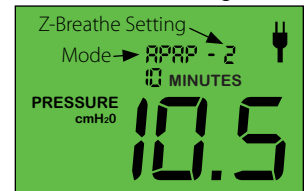
(Figure 4)



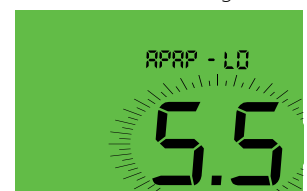
(Figure 5)



(Figure 6)



(Figure 7)



(Figure 8)